

Argo_Atlantic_Profiles

Sebastian Mieruch-Schnülle and Reiner Schlitzer, Alfred Wegener Institute, Bremerhaven, GERMANY
(sebastian.mieruch@awi.de)

This ODV data collection contains the complete set of core-Argo profiles for the Atlantic Ocean. The collection is updated every night, taking into account all data additions and updates as published on the <ftp://ftp.ifremer.fr/ifremer/argo/dac/> site. The data cover the period from July 1997 until the current date.

The Argo netCDF files were downloaded from <ftp://ftp.ifremer.fr/ifremer/argo/dac/>, and are imported using the ODV Argo netCDF profile importer. The list of data variables follows below.

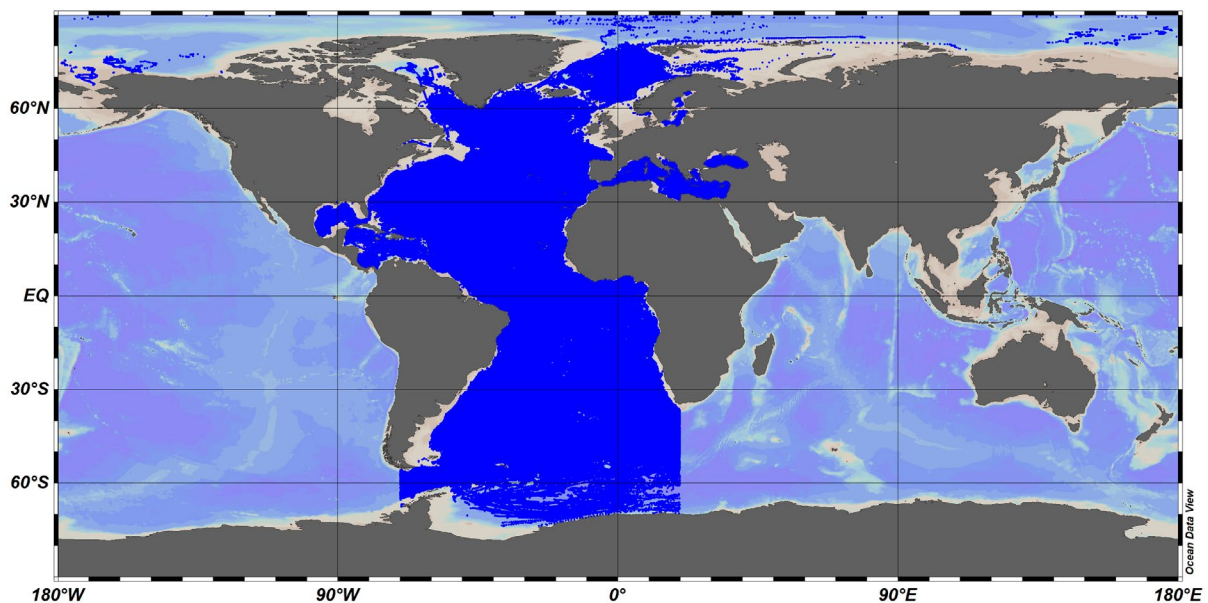
A number of prepared views can be loaded using the *View > Load Views* option in ODV or webODV. Typically, views take a few seconds to load, however, some views involve very large numbers of stations and may take longer. Some example views are shown below. The figures were produced in December 2022; data availability and spatial/temporal coverage will be higher at the time of reading.

When using these data please acknowledge Argo as described [here](#).

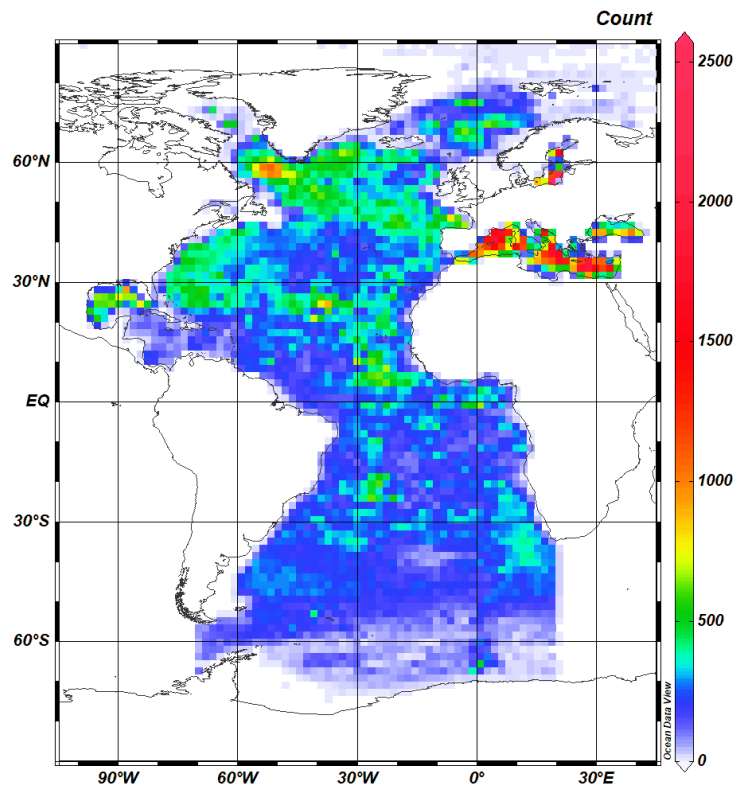
Variables:

1: Pressure (original) [decibar]	PRES Sea water pressure, equals 0 at sea-level
2: Pressure (adjusted) [decibar]	PRES_ADJUSTED Sea water pressure, equals 0 at sea-level
3: Temperature (original) [degrees_Celsius]	TEMP Sea temperature in-situ ITS-90 scale
4: Temperature (adjusted) [degrees_Celsius]	TEMP_ADJUSTED Sea temperature in-situ ITS-90 scale
5: Practical Salinity (original) [psu]	PSAL Practical salinity
6: Practical Salinity (adjusted) [psu]	PSAL_ADJUSTED Practical salinity

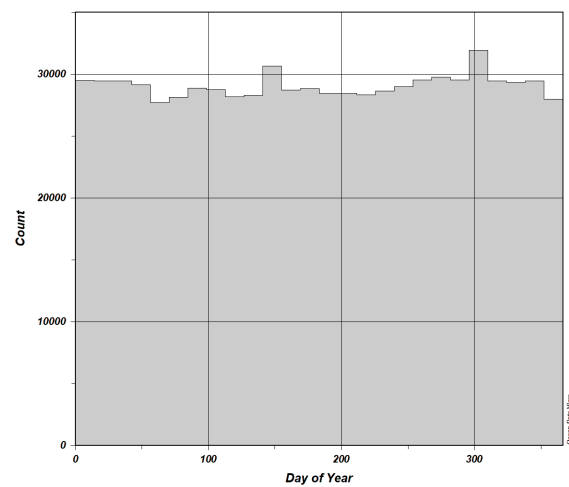
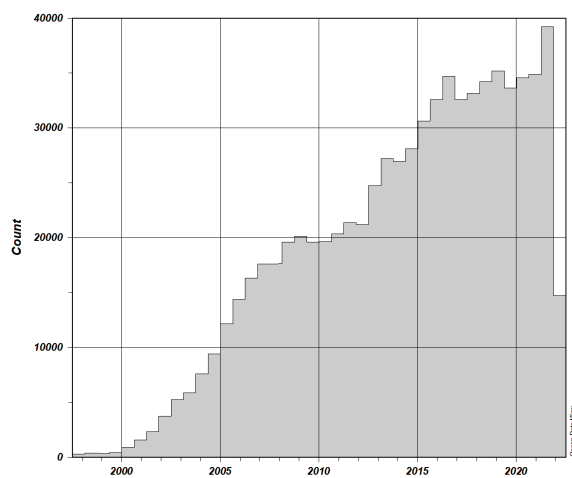
Station Map (as of Dec 2022):



Spatial Coverage (as of Dec 2022):

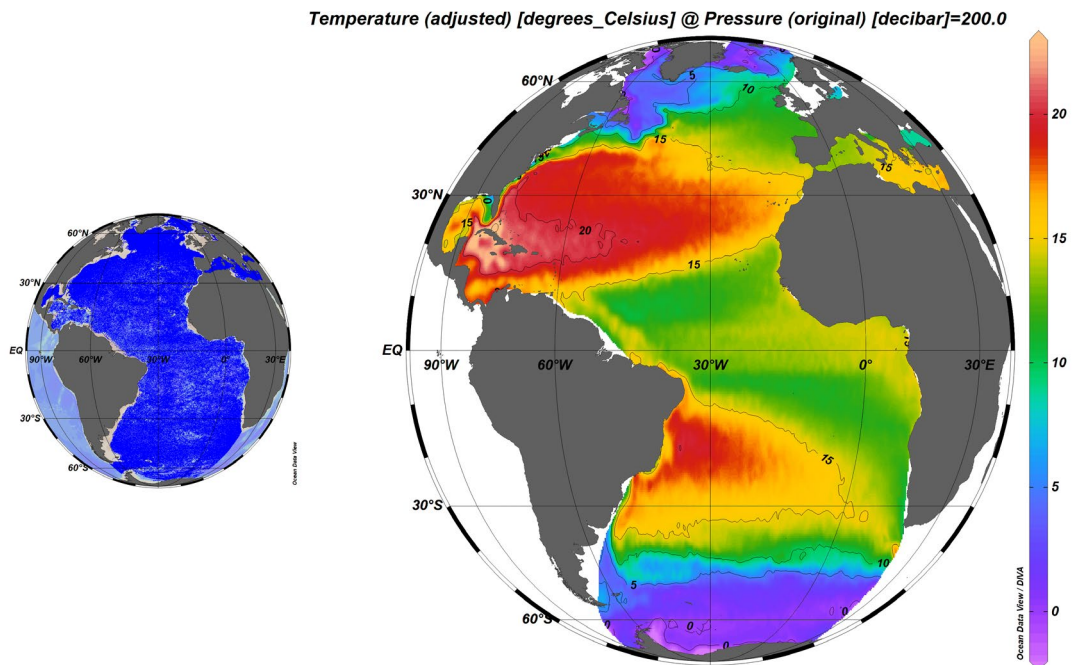


Temporal Coverage (as of Dec 2022):

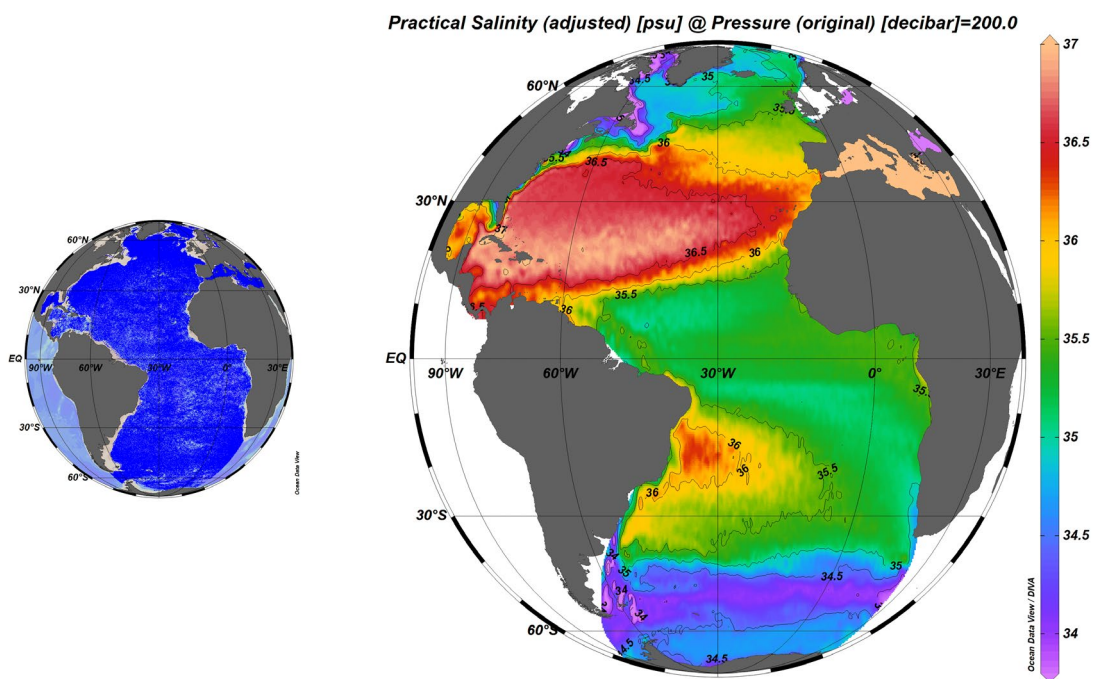


Example Views (as of Dec 2022):

[Temperature_at_200db](#): Annual average temperature at 200 db.



[Salinity_at_200db](#): Annual average salinity at 200 db.



DynHeight-1500db_at_250db_NAtl: Annual average dynamic height relative to 1500 db at 250 db in the North Atlantic.

