

## Argo\_Indian\_Profiles

Sebastian Mieruch-Schnülle and Reiner Schlitzer, Alfred Wegener Institute, Bremerhaven, GERMANY  
(sebastian.mieruch@awi.de)

This ODV data collection contains the complete set of core-Argo profiles for the Indian Ocean. The collection is updated every night, taking into account all data additions and updates as published on the <ftp://ftp.ifremer.fr/ifremer/argo/dac/> site. The data cover the period from October 1999 until the current date.

The Argo netCDF files were downloaded from <ftp://ftp.ifremer.fr/ifremer/argo/dac/>, and are imported using the ODV Argo netCDF profile importer. The list of data variables follows below.

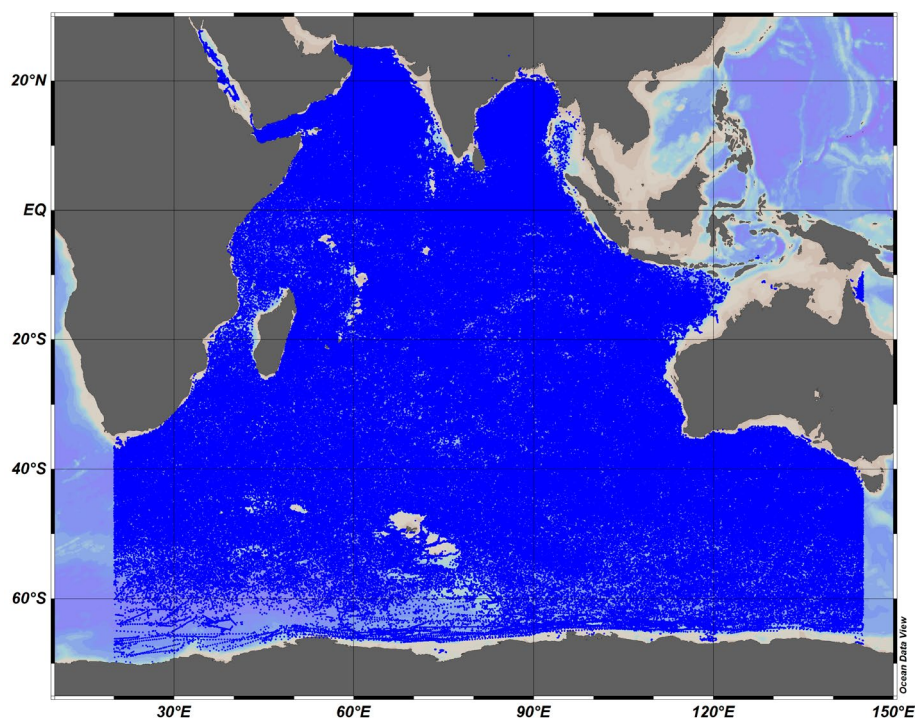
A number of prepared views can be loaded using the View > Load Views option in ODV or webODV. Typically, views take a few seconds to load, however, some views involve very large numbers of stations and may take longer. Some example views are shown below. The figures were produced in December 2022; data availability and spatial/temporal coverage will be higher at the time of reading.

When using these data please acknowledge Argo as described [here](#).

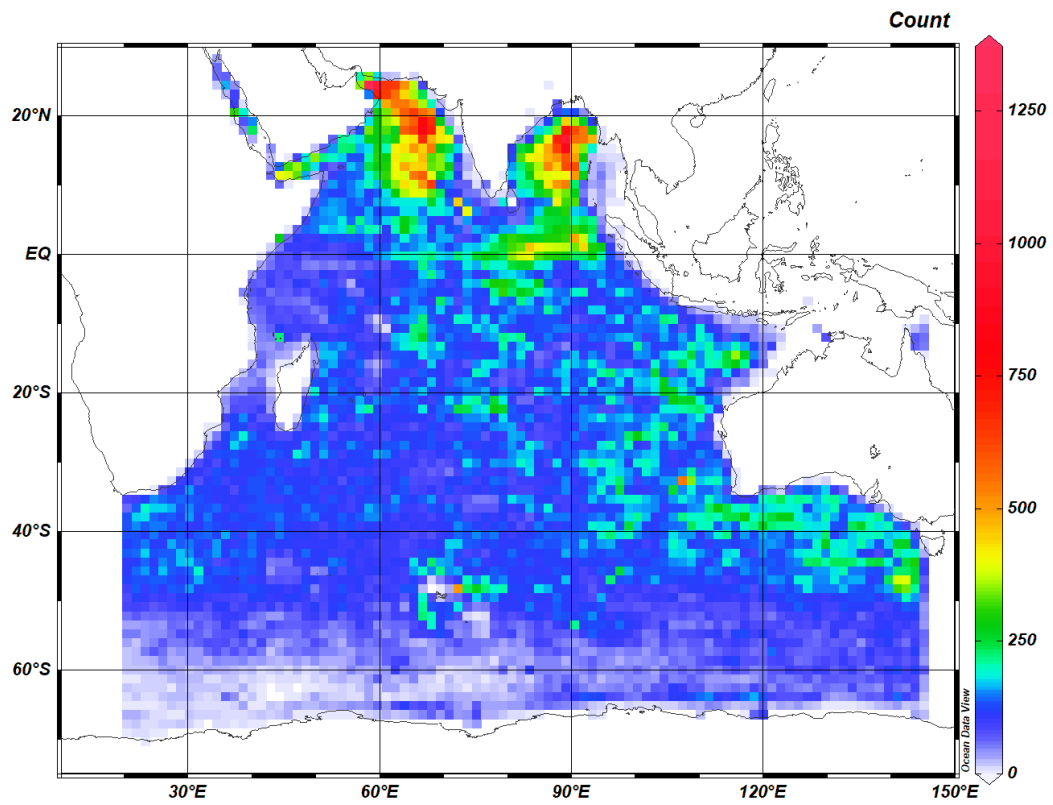
### Variables:

1: Pressure (original) [decibar]	PRES   Sea water pressure, equals 0 at sea-level
2: Pressure (adjusted) [decibar]	PRES_ADJUSTED   Sea water pressure, equals 0 at sea-level
3: Temperature (original) [degrees_Celsius]	TEMP   Sea temperature in-situ ITS-90 scale
4: Temperature (adjusted) [degrees_Celsius]	TEMP_ADJUSTED   Sea temperature in-situ ITS-90 scale
5: Practical Salinity (original) [psu]	PSAL   Practical salinity
6: Practical Salinity (adjusted) [psu]	PSAL_ADJUSTED   Practical salinity

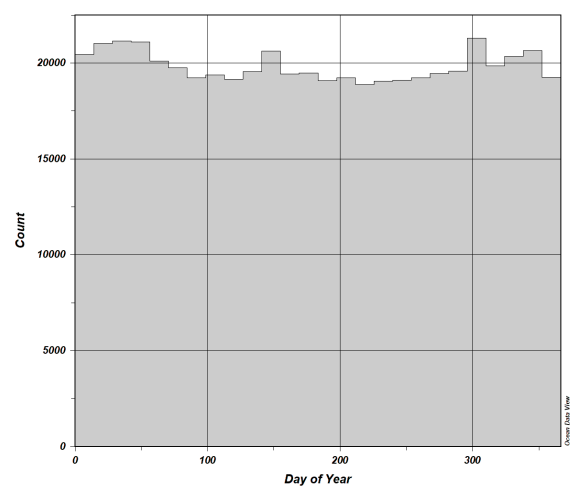
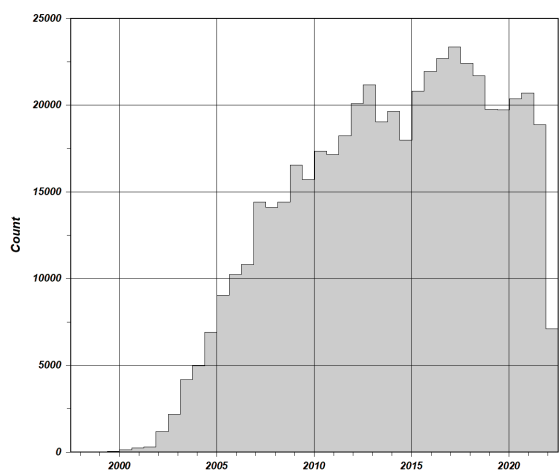
### Station Map (as of Dec 2022):



### Spatial Coverage (as of Dec 2022):

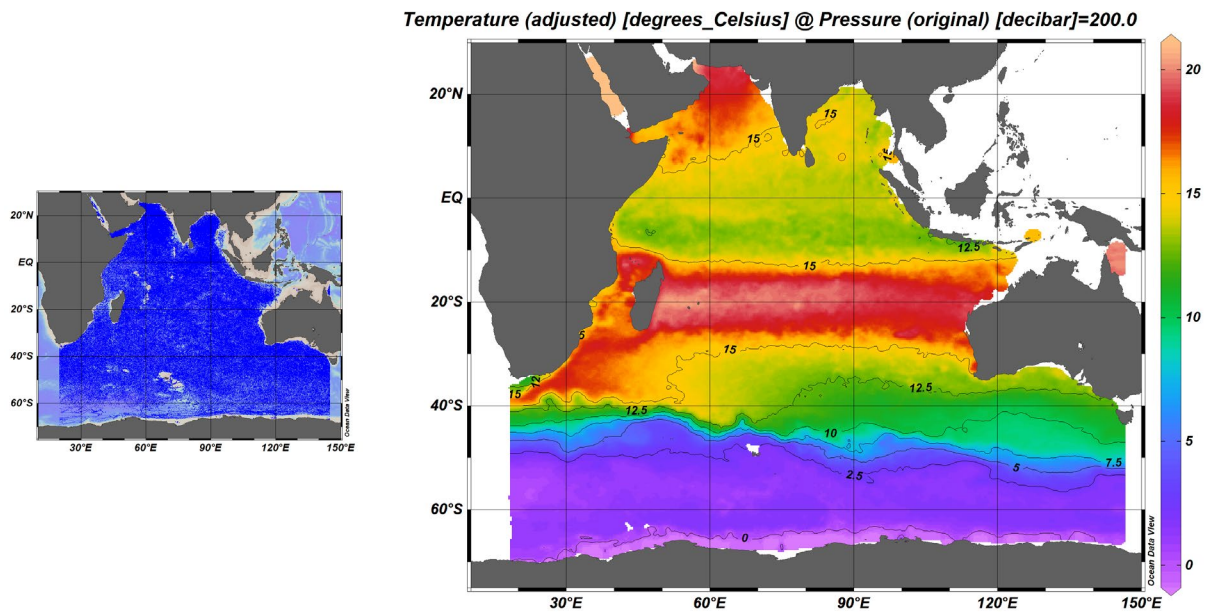


### Temporal Coverage (as of Dec 2022):

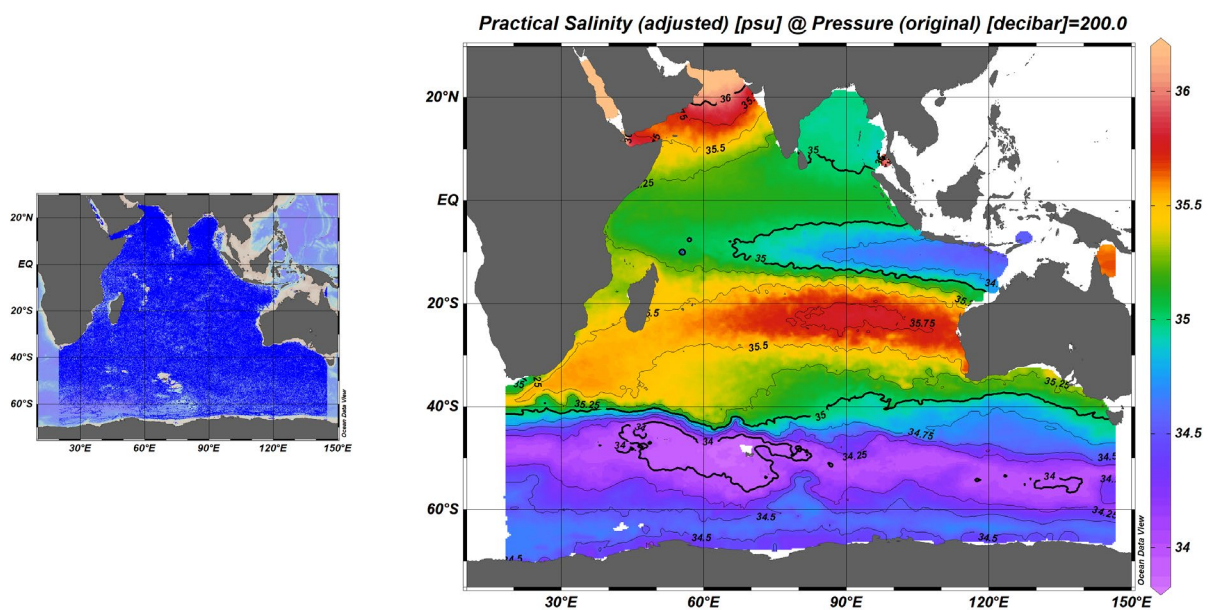


## Example Views (as of Dec 2022):

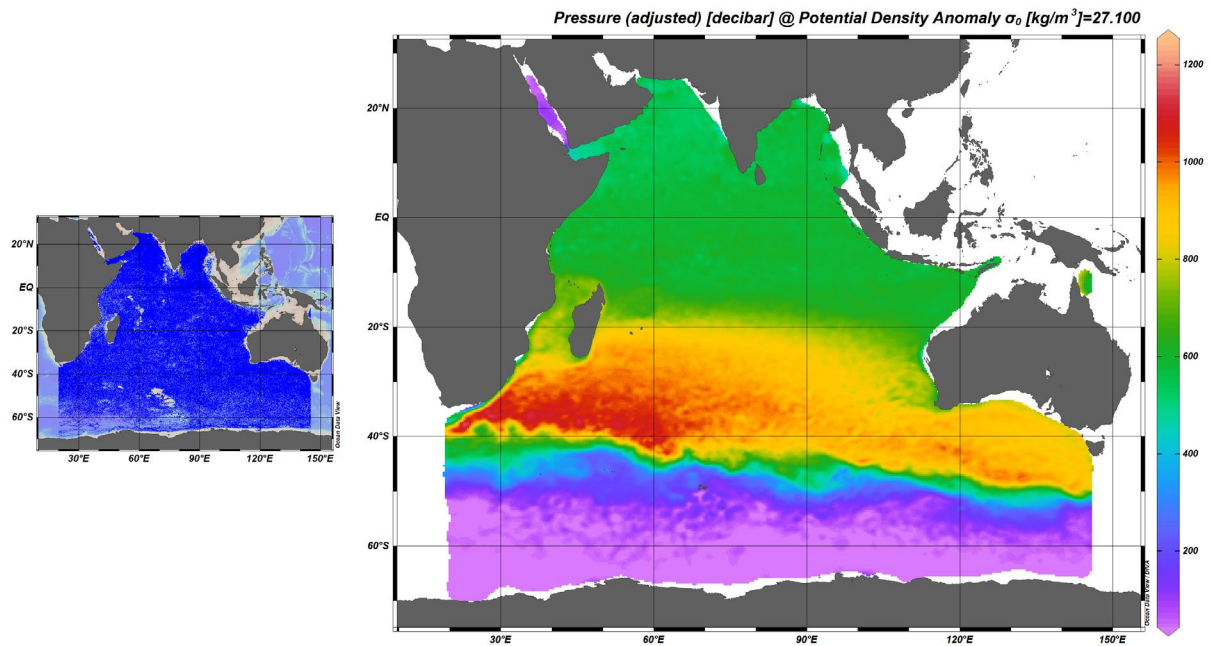
[Temperature\\_at\\_200db](#): Annual average temperature at 200 db.



[Salinity\\_at\\_200db](#): Annual average salinity at 200 db.



Pressure\_at\_sigma0\_27-1\_january: Pressure on the  $\sigma_0=27.1$  isopycnal for January.



T-S\_upper\_50db\_timeseries\_ArabianSea: Temporal evolution of temperature and salinity in the upper 50 db of the water column in the Arabian Sea.

